

# Magnetventile

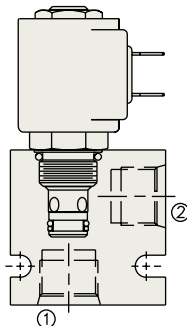
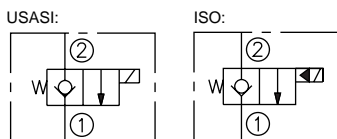


- Gehärtete Sitze und Kolben für lange Lebensdauer und geringe Leckage
- Magnetspulen auch zwischen Gleich- und Wechselstrom austauschbar
- Einheitliche, vergossene Magnetspulen
- Eingeführte Formbohrungen
- Nothandbetätigung wahlweise bei den meisten Typen
- Magnetspulen mit 100 % ED
- Sehr gute Magnetcharakteristik auch bei Unterspannung
- Verschiedene elektrische Anschlüsse möglich

## 2/2-Wege-Sitzventile, stromlos geschlossen

Durchfluß	Typ	Kat. S.
23 lpm/6 gpm	<b>SV08-20</b>	1.010.1
23 lpm/6 gpm	<b>SV08-20J</b>	1.010.3
19 lpm/5 gpm	<b>*SF08-20</b>	1.011.1
23 lpm/6 gpm	<b>SV38-20J</b>	1.011.3
23 lpm/6 gpm	<b>*SV58-20</b>	1.012.1
45 lpm/12 gpm	<b>SV10-20</b>	1.020.1
114 lpm/30 gpm	<b>SV12-20</b>	1.022.1
132 lpm/35 gpm	<b>SV16-20</b>	1.023.1

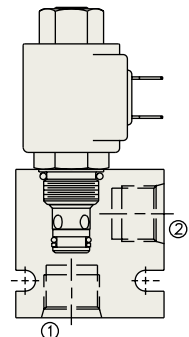
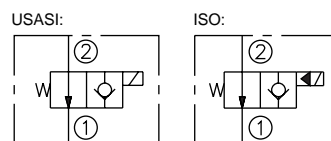
\*345 bar/5000 psi



## 2/2-Wege-Sitzventile, stromlos offen

Durchfluß	Typ	Kat. S.
30 lpm/8 gpm	<b>SV08-21</b>	1.030.1
30 lpm/8 gpm	<b>*SF08-21</b>	1.033.1
57 lpm/15 gpm	<b>SV10-21</b>	1.040.1
114 lpm/30 gpm	<b>SV12-21</b>	1.042.1
132 lpm/35 gpm	<b>SV16-21</b>	1.045.1

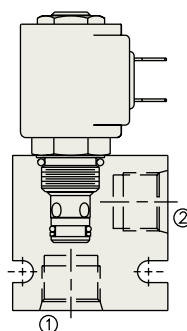
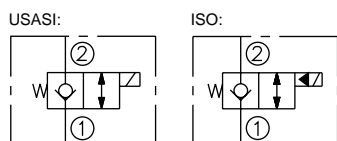
\*345 bar/5000 psi



## 2/2-Wege-Sitzventil, Stromlos geschlossen, mit freiem Rückfluß

Durchfluß	Typ	Kat. S.
1.5 lpm/0.4 gpm	<b>SL08-22</b>	1.046.1
23 lpm/6 gpm	<b>SV08-22</b>	1.048.1
23 lpm/6 gpm	<b>*SF08-22</b>	1.048.3
23 lpm/6 gpm	<b>*SV58-22</b>	1.049.1
45 lpm/12 gpm	<b>SV10-22</b>	1.050.1
114 lpm/30 gpm	<b>SV12-22</b>	1.052.1
132 lpm/35 gpm	<b>SV16-22</b>	1.055.1

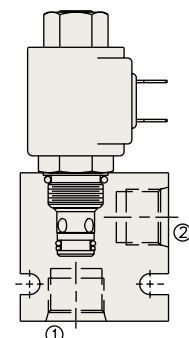
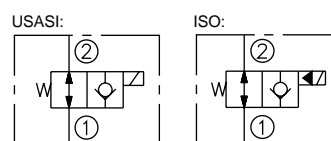
\*345 bar/5000 psi



## 2/2-Wege-Sitzventil, stromlos offen, mit freiem Rückfluß

Durchfluß	Typ	Kat. S.
30 lpm/8 gpm	<b>SV08-23</b>	1.058.1
30 lpm/8 gpm	<b>*SF08-23</b>	1.058.3
30 lpm/8 gpm	<b>*SV58-23</b>	1.059.1
57 lpm/15 gpm	<b>SV10-23</b>	1.060.1
114 lpm/30 gpm	<b>SV12-23</b>	1.062.1
132 lpm/35 gpm	<b>SV16-23</b>	1.065.1

\*345 bar/5000 psi

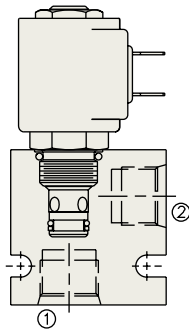
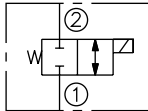


## 2/2-Wege-Schieberventil, stromlos geschlossen

Durchfluß	Typ	Kat. S.
17 lpm/4.5 gpm	<b>SV08-24</b>	1.067.1
17 lpm/4.5 gpm	<b>*SV58-24</b>	1.068.1
38 lpm/10 gpm	<b>SV10-24</b>	1.070.1
76 lpm/20 gpm	<b>SV12-24</b>	1.071.1

\*345 bar/5000 psi

USASI/ISO:

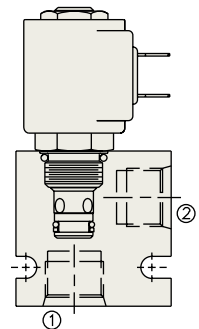
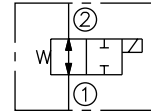


## 2/2-Wege-Schieberventil, stromlos offen

Durchfluß	Typ	Kat. S.
9 lpm/2.5 gpm	<b>SV08-25</b>	1.075.1
7.5 lpm/2 gpm	<b>*SV58-25</b>	1.076.1
18 lpm/5 gpm	<b>SV80-25</b>	1.076.3
22 lpm/6 gpm	<b>SV10-25</b>	1.077.1
76 lpm/20 gpm	<b>SV10-25</b>	1.077.3

\*345 bar/5000 psi

USASI/ISO:

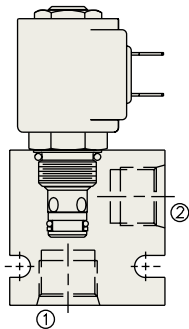
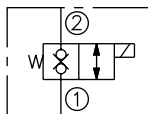


## 2/2-Wege Blockierventil für geringe Durchflüsse, stromlos geschlossen

Durchfluß	Typ	Kat. S.
1 lpm/.26 gpm	<b>SV08-26</b>	1.078.1
2 lpm/.53 gpm	<b>SV38-26</b>	1.079.1
1 lpm/.26 gpm	<b>*SV58-26</b>	1.079.3

\*345 bar/5000 psi

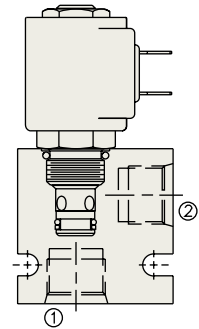
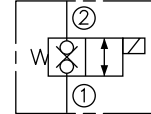
USASI/ISO:



## 2/2-Wege Blockierventil für geringe Durchflüsse, stromlos geschlossen

Durchfluß	Typ	Kat. S.
19 lpm/5 gpm	<b>SV38-28</b>	1.079.5

USASI/ISO:

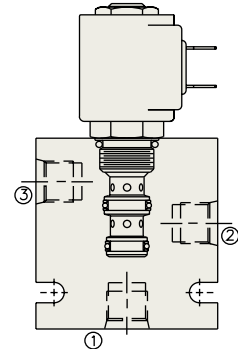
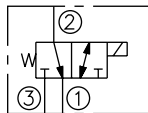


## 3/2-Wegeventil

Durchfluß	Typ	Kat. S.
15 lpm/4 gpm	<b>SV08-30</b>	1.080.1
18 lpm/5 gpm	<b>SV38-30</b>	1.080.3
15 lpm/4 gpm	<b>*SV58-30</b>	1.081.1

\*345 bar/5000 psi

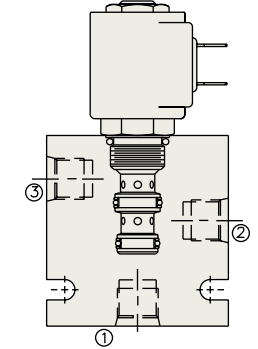
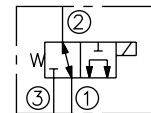
USASI/ISO:



## 3/2-Wegeventil

Durchfluß	Typ	Kat. S.
6 lpm/1.6 gpm	<b>SV07-31</b>	1.083.1
11 lpm/3 gpm	<b>SV08-31</b>	1.085.1
11 lpm/3 gpm	<b>SV38-31J</b>	1.090.1
22 lpm/6 gpm	<b>SV10-31</b>	1.095.1
60 lpm/16 gpm	<b>SV12-31</b>	1.096.1

USASI/ISO:

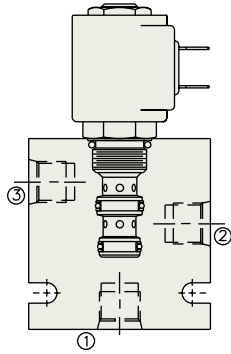
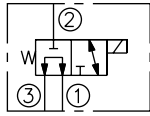


# Magnetventile

## 3/2-Wegeventil

Durchfluß	Typ	Kat. S.
11 lpm/3 gpm	SV08-33	1.098.1
19 lpm/5 gpm	SV10-33	1.099.1
60 lpm/16 gpm	SV12-33	1.100.1

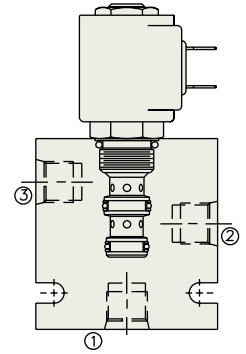
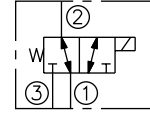
USASI/ISO:



## 3/2-Wegeventil

Durchfluß	Typ	Kat. S.
23 lpm/6 gpm	SV10-34	1.107.1
60 lpm/16 gpm	SV12-34	1.108.1

USASI/ISO:

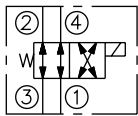


## 4/2-Wegeventil

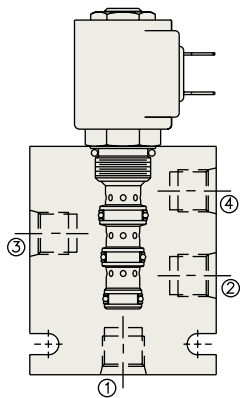
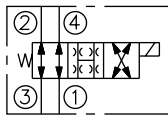
Durchfluß	Typ	Kat. S.
11 lpm/3 gpm	SV08-40	1.120.1
11 lpm/3 gpm	*SV58-40	1.121.1
22 lpm/6 gpm	SV10-40	1.140.1

\*345 bar/5000 psi

USASI/ISO:



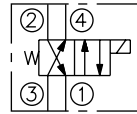
TRANSITION:



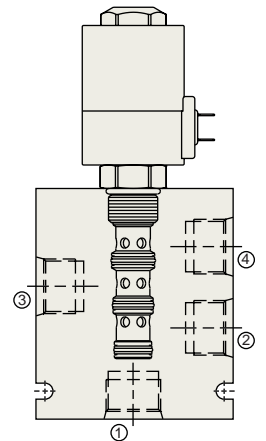
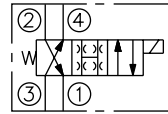
## 4/2-Wegeventil

Durchfluß	Typ	Kat. S.
60 lpm/16 gpm	SV12-40R	1.141.1

USASI/ISO:



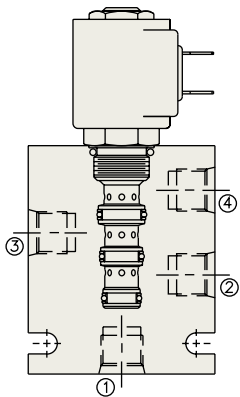
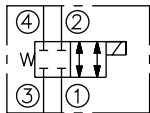
TRANSITION:



## 4/2-Wegeventil

Durchfluß	Typ	Kat. S.
11 lpm/3 gpm	SV08-41	1.150.1
22 lpm/6 gpm	SV10-41	1.160.1

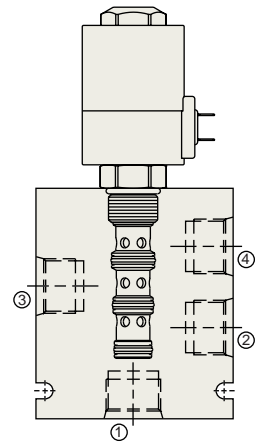
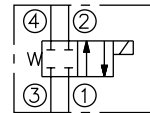
USASI/ISO:



## 4/2-Wegeventil

Durchfluß	Typ	Kat. S.
60 lpm/16 gpm	SV12-41	1.161.1

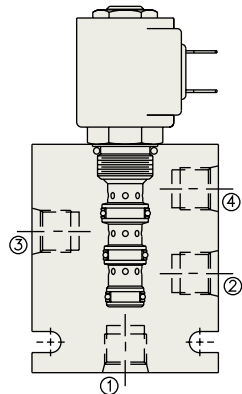
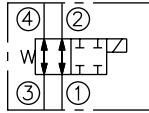
USASI/ISO:



## 4/2-Wegeventil

Durchfluß	Typ	Kat. S.
11 lpm/3 gpm	SV08-42	1.175.1
22 lpm/6 gpm	SV10-42	1.180.1

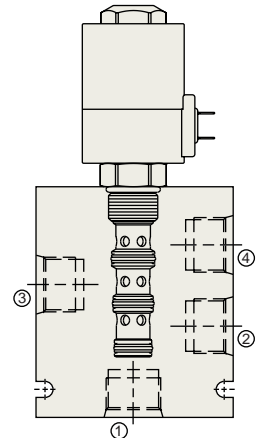
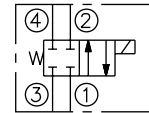
USASI/ISO:



## 4/2-Wegeventil

Durchfluß	Typ	Kat. S.
60 lpm/16 gpm	SV12-42	1.181.1

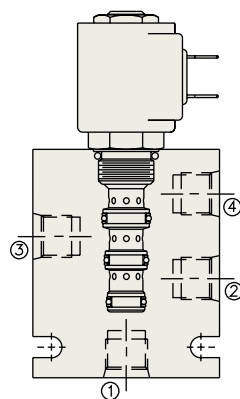
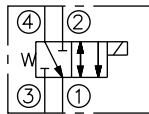
USASI/ISO:



## 4/2-Wegeventil

Durchfluß	Typ	Kat. S.
22 lpm/6 gpm	SV10-43	1.190.1

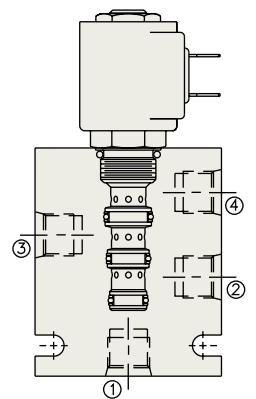
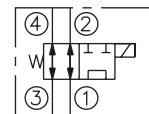
USASI/ISO:



## 4/2-Wegeventil

Durchfluß	Typ	Kat. S.
11 lpm/3 gpm	SV08-44	1.193.1
22 lpm/6 gpm	SV10-44	1.196.1

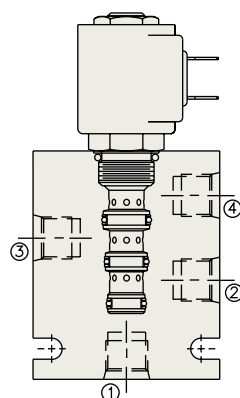
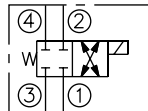
USASI/ISO:



## 4/2-Wegeventil

Durchfluß	Typ	Kat. S.
11 lpm/3 gpm	SV08-45	1.200.1

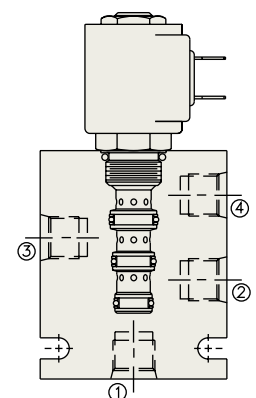
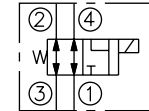
USASI/ISO:



## 4/2-Wegeventil

Durchfluß	Typ	Kat. S.
11 lpm/3 gpm	SV08-46	1.205.1

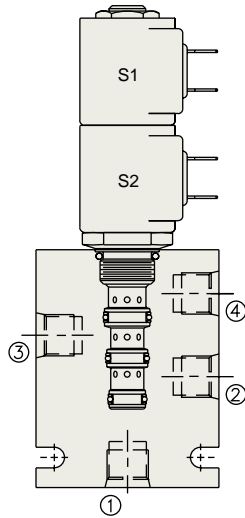
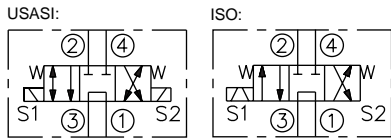
USASI/ISO:



# Magnetventile

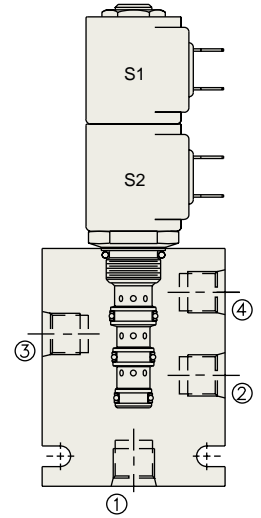
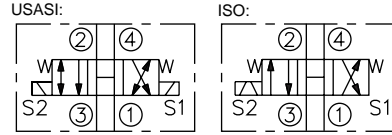
## 4/3-Wegeventil

Durchfluß	Typ	Kat. S.
3.8 lpm/1 gpm	SV08-47A	1.218.3
14 lpm/4 gpm	SV10-47A	1.220.1



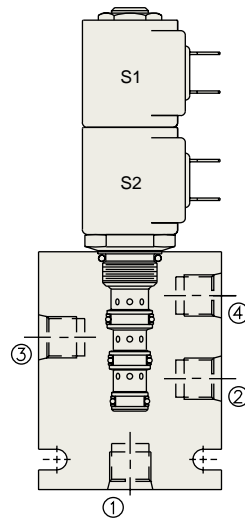
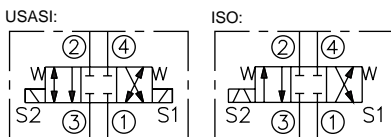
## 4/3-Wegeventil, Mittelstellung alle Anschlüsse verbunden

Durchfluß	Typ	Kat. S.
11 lpm/3 gpm	SV10-47B	1.230.1



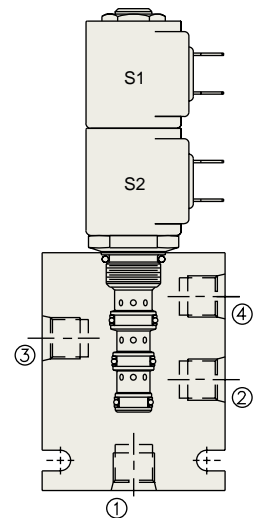
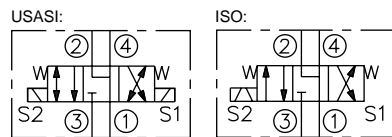
## 4/3-Wegeventil, Mittelstellung alle Anschlüsse gesperrt

Durchfluß	Typ	Kat. S.
11 lpm/3 gpm	SV08-47C	1.238.1
22 lpm/6 gpm	SV10-47C	1.240.1



## 4/3-Wegeventil, Mittelstellung A-B-T verbunden

Durchfluß	Typ	Kat. S.
11 lpm/3 gpm	SV08-47D	1.248.1
22 lpm/6 gpm	SV10-47D	1.250.1



## 4/3-Wegeventil, Mittelstellung P-T verbunden

Durchfluß	Typ	Kat. S.
15 lpm/4 gpm	SV10-47F	1.255.1

