

Stromregelventile

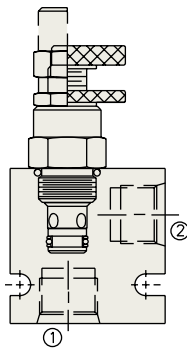
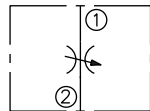


- Verstellschrauben sind gegen Herausdrehen gesichert
- Gehärtete Teile für lange Lebensdauer und geringe Leckage
- Eingeführte Formbohrungen
- Handradverstellung wahlweise
- Stabiles Regelverhalten

Drosselventil

Durchfluß	Typ	Kat. S.
38 lpm/10 gpm	NV08-20	3.010.1
56 lpm/15 gpm	NV10-20	3.012.1
129 lpm/34 gpm	NV12-20	3.014.1

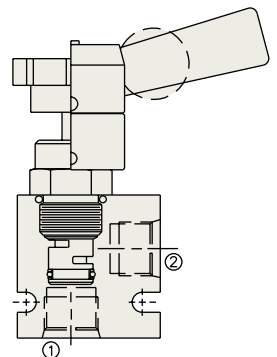
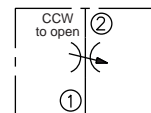
USASI/ISO:



Drehkolben-Drossel

Durchfluß	Typ	Kat. S.
53 lpm/14 gpm	MR10-20	3.015.1

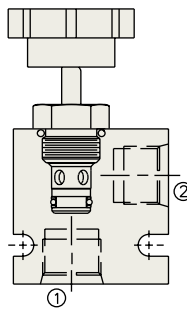
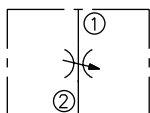
USASI/ISO:



Drosselventil mit Feinregulierung

Durchfluß	Typ	Kat. S.
38 lpm/10 gpm	NV08-21	3.016.1
56 lpm/15 gpm	NV10-21	3.018.1

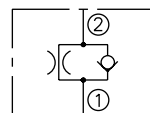
USASI/ISO:



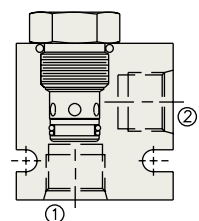
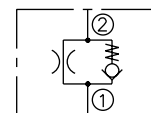
Drossel-Rückschlagventil, freier Durchfluß von ② nach ①

Durchfluß	Typ	Kat. S.
45 lpm/12 gpm	FC08-20F	3.022.1

USASI:



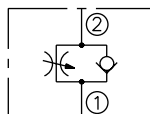
ISO:



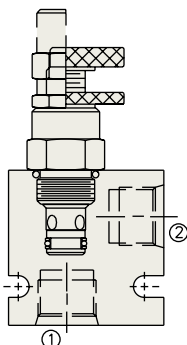
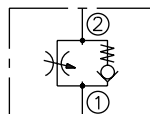
Drossel-Rückschlagventil, freier Durchfluß von ① nach ②

Durchfluß	Typ	Kat. S.
45 lpm/12 gpm	FC10-20	3.023.1
129 lpm/34 gpm	FC12-20	3.024.1

USASI:



ISO:

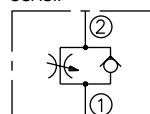


2-Wege Stromregler, druckkompensiert, fest eingestellt

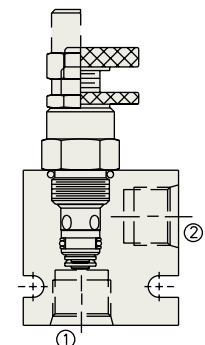
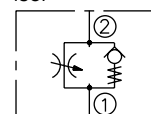
Durchfluß	Typ	Kat. S.
56 lpm/15 gpm	FC10-21	3.025.1

Achtung: Manche Gehäuse mit Verschraubungen behindern die Ventilfunktion

USASI:



ISO:

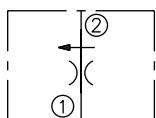


Stromregelventile

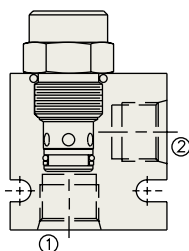
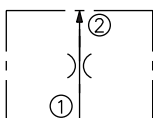
2-Wege Stromregler, druckkompensiert, fest eingestellt

Durchfluß	Typ	Kat. S.
7.5 lpm/2 gpm	FR08-20F	3.030.1
22.7 lpm/6 gpm	FR10-20F	3.035.1
56 lpm/15 gpm	FR12-20F	3.036.1
113 lpm/30 gpm	FR16-20F	3.040.1

USASI:



ISO:

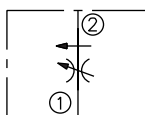


2-Wege-Stromregler, druckkompensiert, regelbar

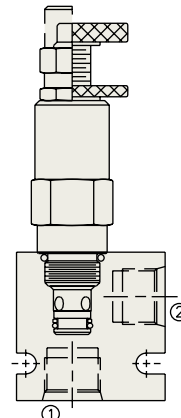
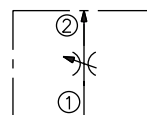
Durchfluß	Typ	Kat. S.
7.5 lpm/2 gpm	*FR08-20A	—
26.5 lpm/7 gpm	*FR10-20A	—
56 lpm/15 gpm	*FR12-20A	—

*Wenden Sie sich bitte an unser Werk.

USASI:



ISO:

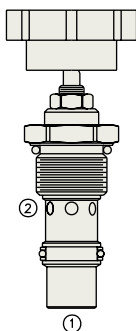
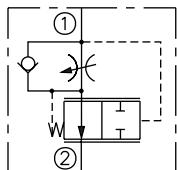


Mengenregler mit einstellbarer Drossel

Durchfluß	Typ	Kat. S.
76 lpm/20 gpm	FR12-23	3.045.1

Achtung: spezielle Formbohrung notwendig

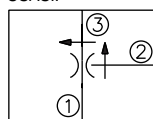
USASI/ISO:



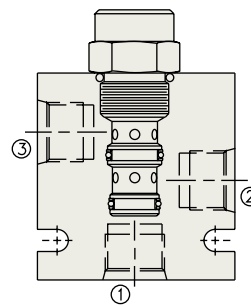
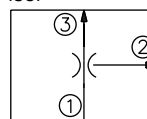
3-Wege Stromregler, druckkompensiert, fest eingestellt

Durchfluß	Typ	Kat. S.
7.6 lpm/2 gpm	FR08-30F	3.048.1
37 lpm/10 gpm	FR10-30F	3.050.1
94 lpm/25 gpm	FR12-30F	3.052.1

USASI:



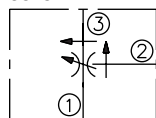
ISO:



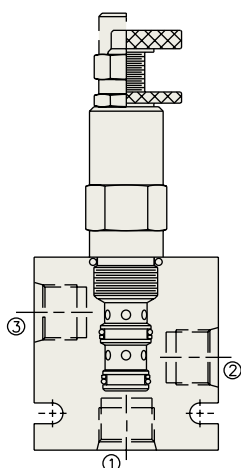
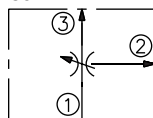
3-Wege Stromregler, druckkompensiert, einstellbar

Durchfluß	Typ	Kat. S.
22 lpm/6 gpm	FR10-30A	3.060.1

USASI:



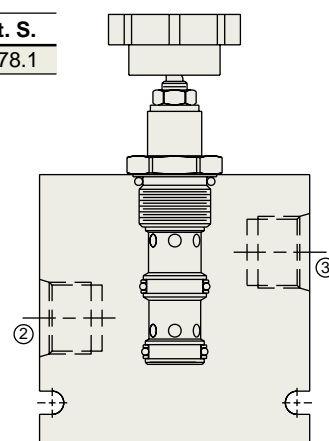
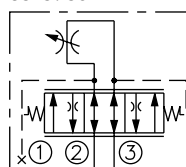
ISO:



Stromregler, druckkompensiert, einstellbar, doppel-wirkend

Durchfluß	Typ	Kat. S.
50 lpm/13 gpm	FR12-32	3.078.1

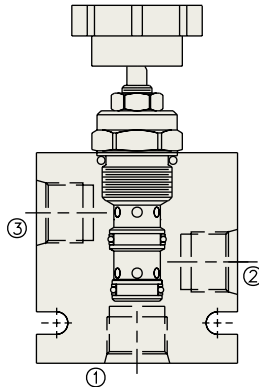
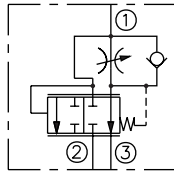
USASI/ISO:



3-Wege Mengenregler mit einstellbarer Drossel

Durchfluß	Typ	Kat. S.
13 lpm/3 gpm	FR10-33	3.070.1
38 lpm/10 gpm	FR10-39	3.071.1
68 lpm/18 gpm	FR12-33	3.080.1

USASI/ISO:

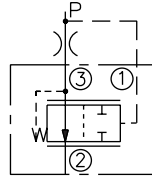


2-Wege Druckwaage

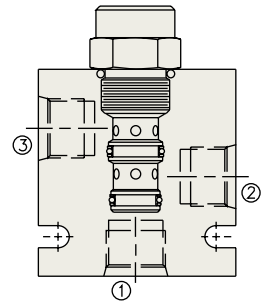
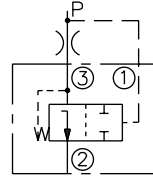
Durchfluß	Typ	Kat. S.
30 lpm/8 gpm	EC10-30	3.600.1
30 lpm/8 gpm	*EC50-30	3.605.1
56 lpm/15 gpm	EC12-30	3.620.1

*345 bar/5000 psi

USASI:



ISO:



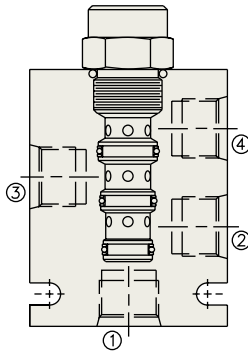
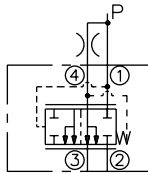
Druckwaage, mit prioritäts-Funktion

Durchfluß	Typ	Kat. S.
38 lpm/10 gpm	EC10-40	3.700.1
38 lpm/10 gpm	*ECV10-44	3.750.1
38 lpm/10 gpm	**EC50-40	3.702.1
79 lpm/21 gpm	EC12-40	3.720.1
100 lpm/26 gpm	EC16-40	3.730.1

*Nur als Gehäuseventil erhältlich

**345 bar/5000 psi

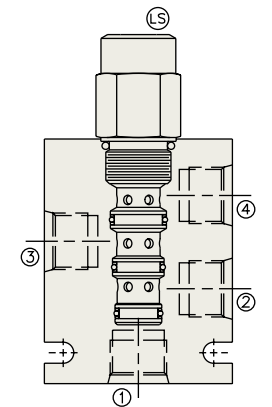
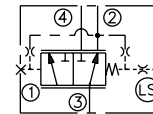
USASI/ISO:



Druckwaage, Load Sensing, mit prioritäts-Funktion

Durchfluß	Typ	Kat. S.
26 lpm/7 gpm	EC10-41	3.740.1
76 lpm/20 gpm	EC12-41	3.741.1
189 lpm/50 gpm	EC42-M41	3.745.1

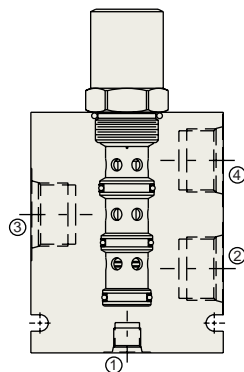
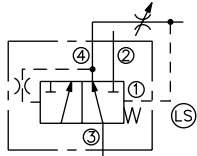
USASI/ISO:



Druckwaage, Load Sensing, mit prioritäts-Funktion

Durchfluß	Typ	Kat. S.
190 lpm/50 gpm	EC16-42	3.746.1

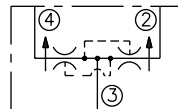
USASI/ISO:



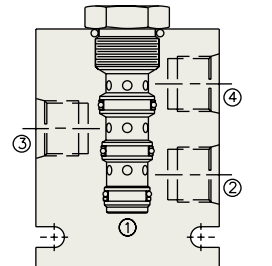
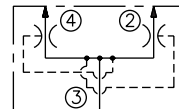
Mengenteiler

Durchfluß	Typ	Kat. S.
45 lpm/12 gpm	FD10-40	3.800.1
90 lpm/24 gpm	FD12-40	3.805.1
150 lpm/40 gpm	FD16-40	3.810.1

USASI:



ISO:

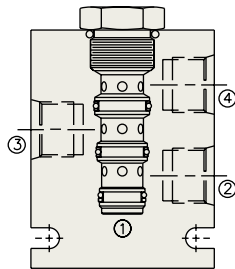
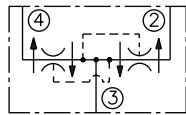


Stromregelventile

Mengenteiler mit Zylinder-Endlagenausgleich

Durchfluß	Typ	Kat. S.
45 lpm/12 gpm	FD10-41	3.820.1
90 lpm/24 gpm	FD12-41	3.825.1

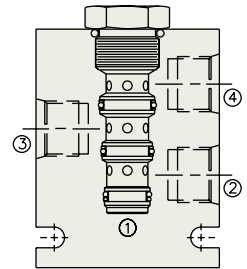
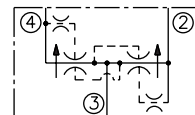
USASI/ISO:



Druckwaage, mit Schlupfregelung

Durchfluß	Typ	Kat. S.
60 lpm/16 gpm	FD10-42	3.830.1
151 lpm/40 gpm	FD16-42	3.840.1

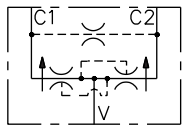
USASI/ISO:



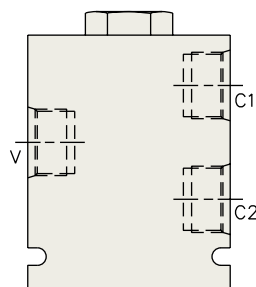
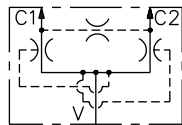
Mengenteiler mit Zylinder-Endlagenausgleich

Durchfluß	Typ	Kat. S.
150 lpm/40 gpm	FDC16	3.852.1

USASI:



ISO:

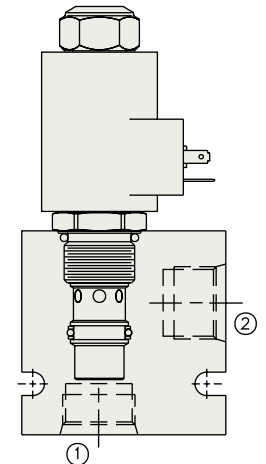
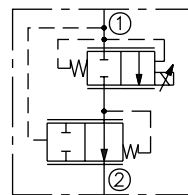


Proportional-Drosselventil, stromlos geschlossen

Durchfluß	Typ	Kat. S.
56 lpm/15 gpm	PV72-20	3.921.1

Achtung: spezielle Formbohrung notwendig

USASI/ISO:

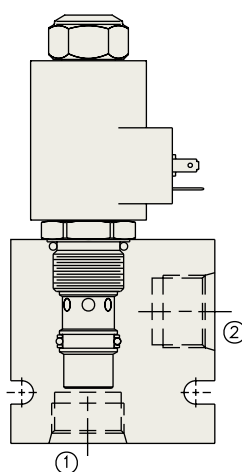
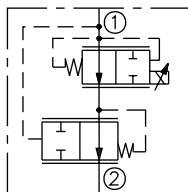


Proportional-Drosselventil, stromlos offen

Durchfluß	Typ	Kat. S.
56 lpm/15 gpm	PV72-21	3.922.1

Achtung: spezielle Formbohrung notwendig

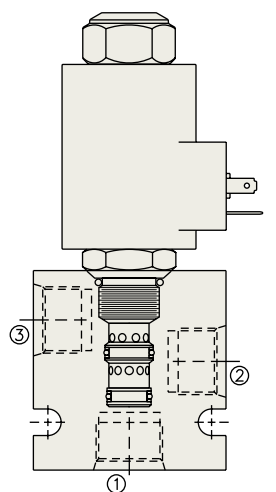
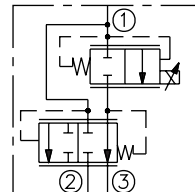
USASI/ISO:



Proportional Stromregler, stromlos geschlossen

Durchfluß	Typ	Kat. S.
30 lpm/8 gpm	PV70-30	3.923.1
64 lpm/17 gpm	PV72-30	3.948.1

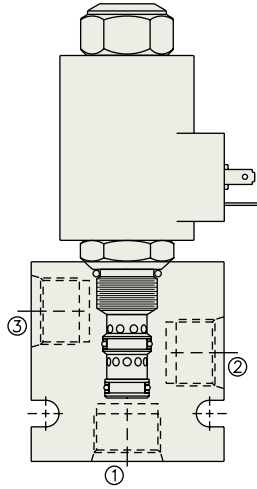
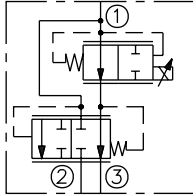
USASI/ISO:



Proportional Stromregler, stromlos offen

Durchfluß	Typ	Kat. S.
30 lpm/8 gpm	PV70-31	3.926.1
53 lpm/14 gpm	PV72-31	3.949.1

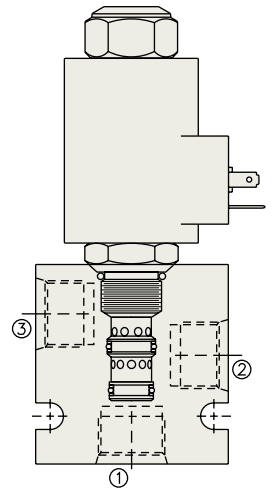
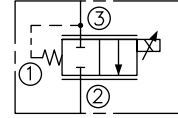
USASI/ISO:



Proportional Drosselventil, stromlos geschlossen

Durchfluß	Typ	Kat. S.
38 lpm/10 gpm	PV70-33	3.930.1
76 lpm/20 gpm	PV72-33	3.950.1

USASI/ISO:

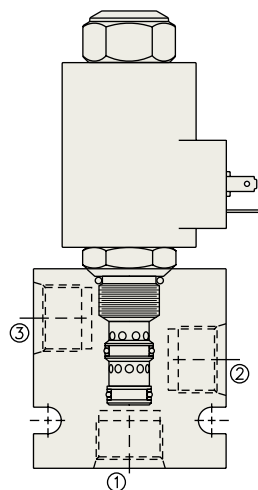
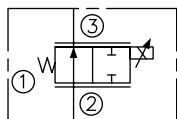


Die Durchflußwerte der Prop.-Drosseln sind abhängig von der im Verstellbereich befindlichen Düsenbohrung und der eingesetzten Druckwaage. Bei Fragen wenden Sie sich bitte an uns.

Proportional Drosselventil, stromlos offen

Durchfluß	Typ	Kat. S.
38 lpm/10 gpm	PV70-35	3.940.1
76 lpm/20 gpm	PV72-35	3.960.1

USASI/ISO:

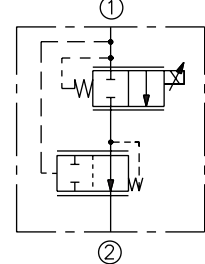


Die Durchflußwerte der Prop.-Drosseln sind abhängig von der im Verstellbereich befindlichen Düsenbohrung und der eingesetzten Druckwaage. Bei Fragen wenden Sie sich bitte an uns.

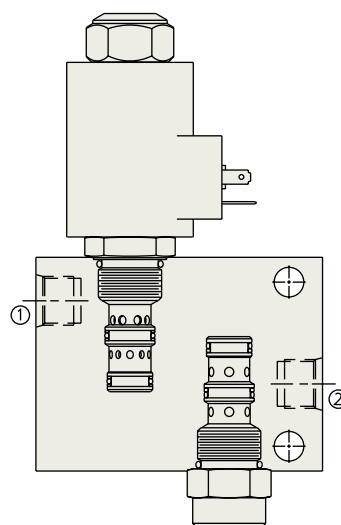
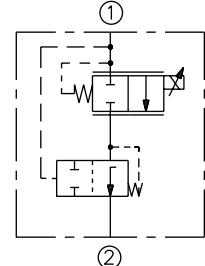
Proportional Mengenregler, Druckkompensiert, stromlos geschlossen

Durchfluß	Typ	Kat. S.
30 lpm/8 gpm	PFR70-33E	3.931.1
60 lpm/16 gpm	PFR72-33L	3.952.1

USASI:



ISO:

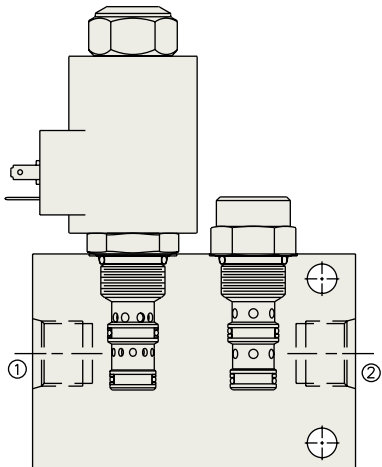


Die Abbildung zeigt PFR70-33E

Stromregelventile

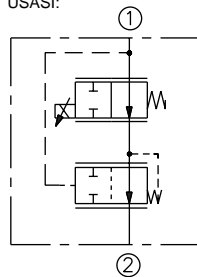
Proportional Mengenregler, Druckkompensiert, stromlos offen

Durchfluß	Typ	Kat. S.
30 lpm/8 gpm	PFR70-35E	3.941.1
60 lpm/16 gpm	PFR72-35L	3.961.1

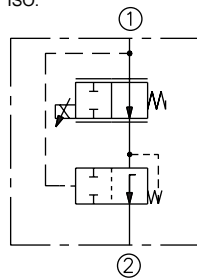


Die Abbildung zeigt PFR70-35E

USASI:

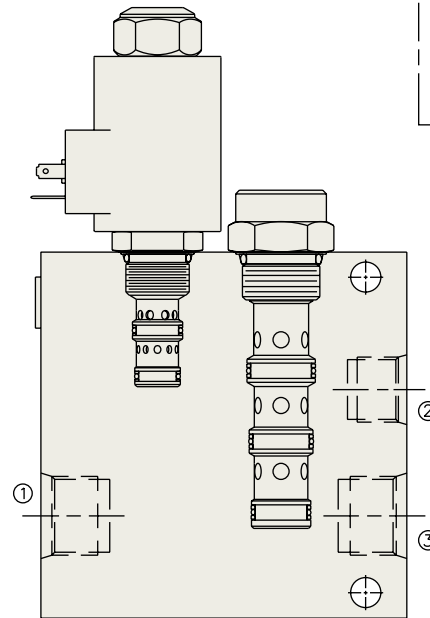


ISO:

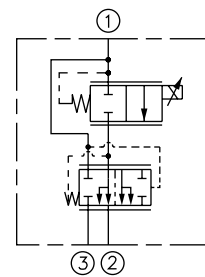


Proportional Mengenregler, Druckkompensiert, stromlos geschlossen

Durchfluß	Typ	Kat. S.
30 lpm/8 gpm	PFR70-33F	3.932.1
30 lpm/8 gpm	PFR70-33J	3.933.1
60 lpm/16 gpm	PFR72-33J	3.951.1



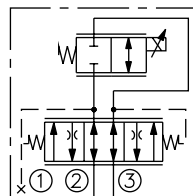
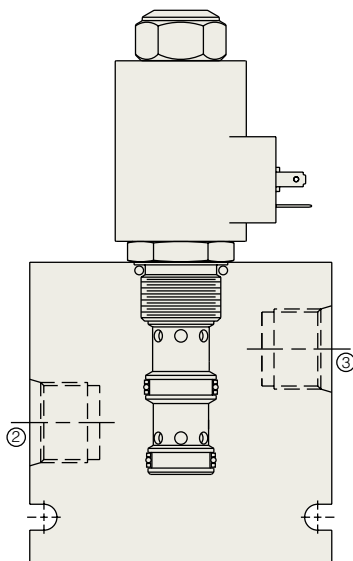
USASI/ISO:



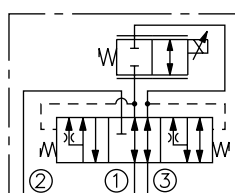
Die Abbildung zeigt PFR70-33J

Proportional Stromregler, doppel-wirkend stromlos geschlossen

Durchfluß	Typ	Kat. S.
50 lpm/13 gpm	ZL72-30	3.964.1



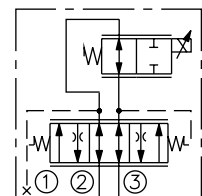
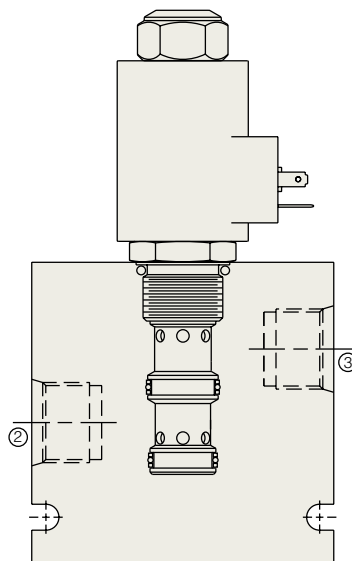
Patent in Anfrage



Durchfluß	Typ	Kat. S.
50 lpm/13 gpm	ZL72-33	3.966.1

Proportional Stromregler, doppel-wirkend stromlos offen

Durchfluß	Typ	Kat. S.
50 lpm/13 gpm	ZL72-31	3.965.1



Patent in Anfrage