

Wegeventile

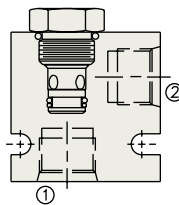
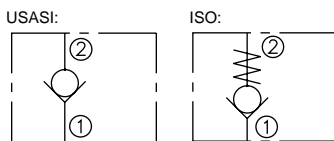


- Eingeführte Formbohrungen
- Gehärtete Sitze und Kolben für lange Lebensdauer und geringe Leckage
- Erlauben flexible Gestaltung von Kreisläufen

Rückschlagventil, geführtes Dichtelement

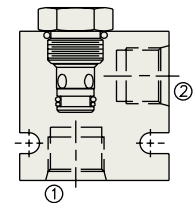
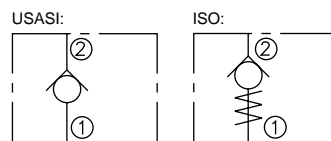
Durchfluß	Typ	Kat. S.
5 lpm/1.5 gpm	CV04-20	2.005.1
5 lpm/1.5 gpm	CV04-B20	2.005.1
30 lpm/8 gpm	CV08-20	2.010.1
57 lpm/15 gpm	CV10-20	2.020.1
57 lpm/15 gpm	*CV50-20	2.020.3
95 lpm/25 gpm	CV12-20	2.021.1
151 lpm/40 gpm	CV16-20	2.022.1
378 lpm/100 gpm	CV42-M20	2.023.1

*345 bar/5000 psi



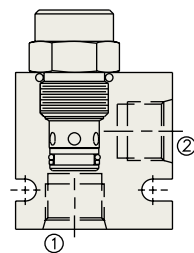
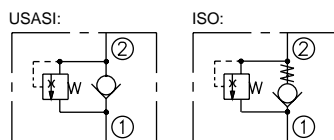
Rückschlagventil, geführtes Dichtelement, umgekehrte Durchflußrichtung

Durchfluß	Typ	Kat. S.
30 lpm/8 gpm	CV08-21	2.024.1
56 lpm/15 gpm	CV10-21	2.025.1
114 lpm/30 gpm	CV12-21	2.026.1
49 lpm/13 gpm	CV10-23	2.027.1
56 lpm/15 gpm	CV10-24	2.027.3



Rückschlagventil, geführtes Dichtelement, mit thermischer Absicherung

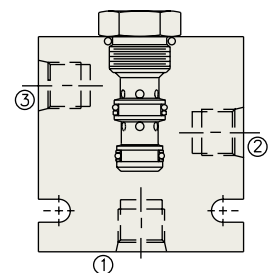
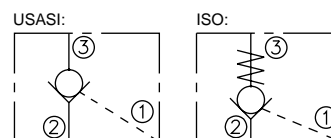
Durchfluß	Typ	Kat. S.
45 lpm/12 gpm	CV10-28	2.028.1
95 lpm/25 gpm	CV12-28	2.029.1



Entsperrbares Rückschlagventil

Durchfluß	Typ	Kat. S.
18 lpm/5 gpm	PC08-30	2.050.1
22 lpm/6 gpm	PC10-30	2.060.1
30 lpm/8 gpm	PC10-32	2.061.1
45 lpm/12 gpm	*PCV10	2.063.1
95 lpm/25 gpm	*PCV12	2.064.1
151 lpm/40 gpm	*PCV16	2.065.1

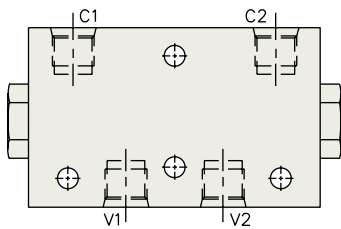
*Nur als Gehäuseventil erhältlich



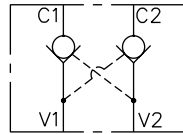
Zwilling-Rückschlagventil, entsperrbar, wahlweise mit therm. Absicherung

Durchfluß	Typ	Kat. S.
22 lpm/6 gpm	*DCV08	2.066.1
45 lpm/12 gpm	*DCV10	2.067.1
95 lpm/25 gpm	*DCV12	2.068.1

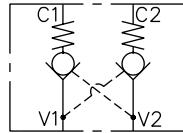
*Nur als Gehäuseventil erhältlich



USASI:



ISO:

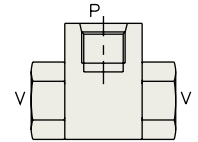
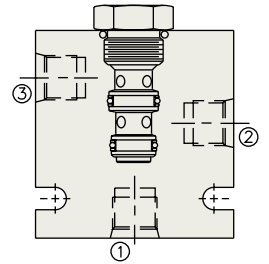
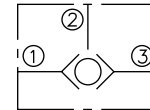


Wechselventil, Kugelbauweise

Durchfluß	Typ	Kat. S.
22 lpm/6 gpm	*LSV1	2.069.1
3.8 lpm/1 gpm	LS04-B30 Cartridge	2.069.3
15 lpm/4 gpm	LS08-30 Cartridge	2.070.1
22 lpm/6 gpm	LS10-30 Cartridge	2.071.1
30 lpm/8 gpm	LS50-30 Cartridge	2.072.1

*Nur als Gehäuseventil erhältlich

USASI/ISO:

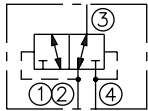


Spülventil, normal geschlossen

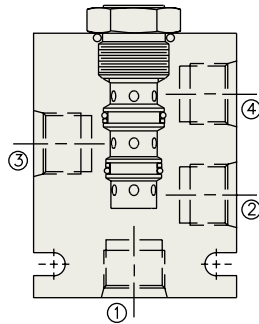
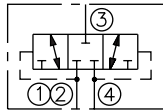
Durchfluß	Typ	Kat. S.
22 lpm/6 gpm	HS10-42	2.085.1
22 lpm/6 gpm	*HS50-42	2.085.1
114 lpm/30 gpm	*HS52-42	2.090.1

*345 bar/5000 psi

USASI/ISO:



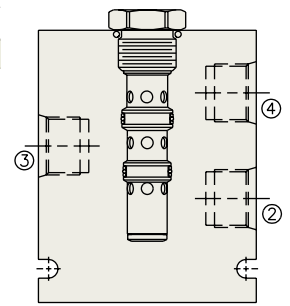
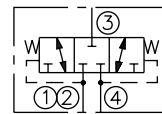
TRANSITION:



Spuelventil, Federzentriert

Durchfluß	Typ	Kat. S.
132 lpm/35 gpm	HS52-43	2.091.1

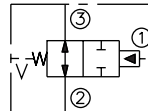
USASI/ISO:



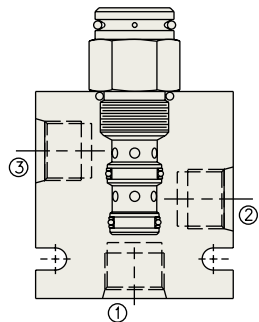
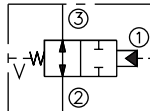
Hydr. gesteuertes 2-Wege Schieberventil, normal offen, Federraum entlüftet

Durchfluß	Typ	Kat. S.
38 lpm/10 gpm	PD10-30	2.310.1
114 lpm/30 gpm	PD12-30	2.312.1

USASI:



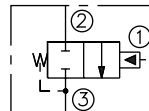
ISO:



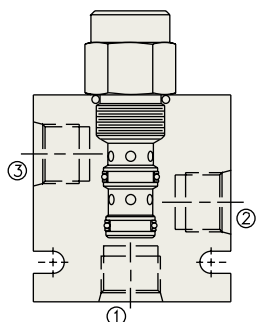
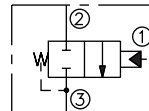
Hydr. gesteuertes 2-Wege Schieberventil, normal geschlossen, internes Lecköl

Durchfluß	Typ	Kat. S.
38 lpm/10 gpm	PD10-32	2.316.1
114 lpm/30 gpm	PD12-32	2.318.1

USASI:



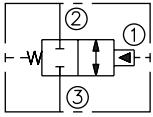
ISO:



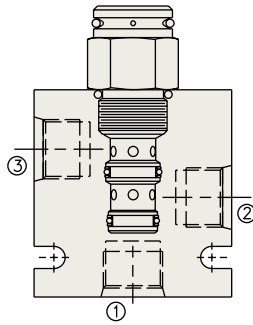
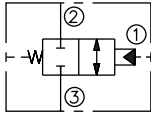
Hydr. gesteuertes 2-Wege Schieberventil, normal offen, Federraum entlüftet

Durchfluß	Typ	Kat. S.
38 lpm/10 gpm	PD10-34	2.320.1
114 lpm/30 gpm	PD12-34	2.322.1

USASI:



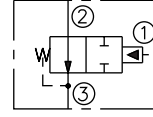
ISO:



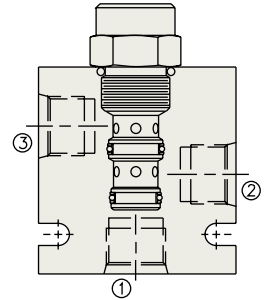
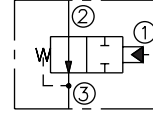
Hydr. gesteuertes 2-Wege Schieberventil, normal offen, internes Lecköl

Durchfluß	Typ	Kat. S.
38 lpm/10 gpm	PD10-35	2.326.1
114 lpm/30 gpm	PD12-35	2.330.1

USASI:



ISO:

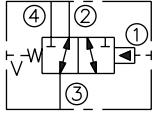


Hydr. gesteuertes 3/2-Wege Schieberventil, Federraum entlüftet

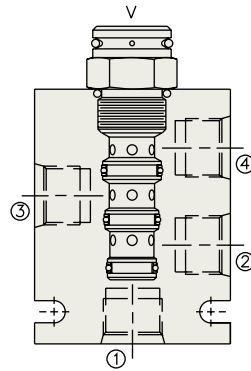
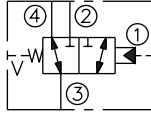
Durchfluß	Typ	Kat. S.
30 lpm/8 gpm	PD10-40	2.340.1
114 lpm/30 gpm	PD12-40	2.342.1
170 lpm/45 gpm	PD16-40	2.346.1
265 lpm/70 gpm	*PD42-M40	2.348.1

*345 bar/5000 psi

USASI:



ISO:

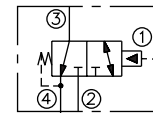


Hydr. gesteuertes 3/2-Wege Schieberventil, normal offen, internes Lecköl

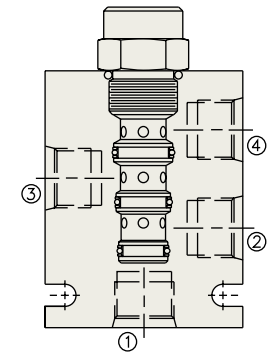
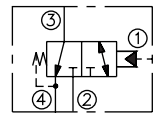
Durchfluß	Typ	Kat. S.
30 lpm/8 gpm	PD10-41	2.350.1
114 lpm/30 gpm	PD12-41	2.352.1
170 lpm/45 gpm	PD16-41	2.356.1
265 lpm/70 gpm	*PD42-M41	2.358.1

*345 bar/5000 psi

USASI:



ISO:

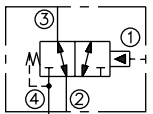


Hydr. gesteuertes 3/2-Wege Schieberventil, normal offen, internes Lecköl

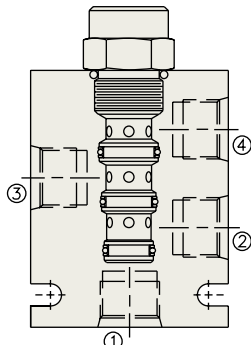
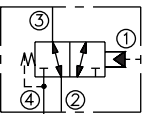
Durchfluß	Typ	Kat. S.
38 lpm/10 gpm	PD10-42	2.360.1
114 lpm/30 gpm	PD12-42	2.362.1
170 lpm/45 gpm	PD16-42	2.366.1
265 lpm/70 gpm	*PD42-M42	2.368.1

*345 bar/5000 psi

USASI:



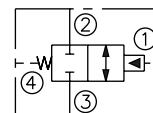
ISO:



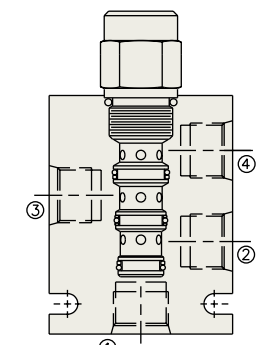
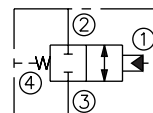
Hydr. gesteuertes 2-Wege Schieberventil, Federraum entlüftet

Durchfluß	Typ	Kat. S.
30 lpm/8 gpm	PD10-44	2.370.1
114 lpm/30 gpm	PD12-44	2.372.1
170 lpm/45 gpm	PD16-44	2.376.1

USASI:



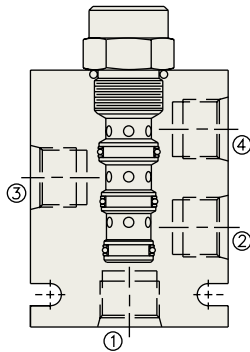
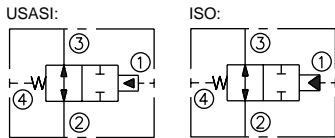
ISO:



Logikelement, hydr. angesteuert, Schieberventil

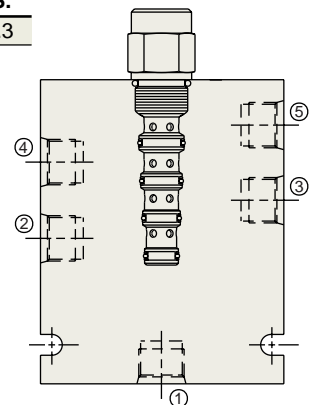
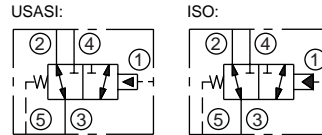
Durchfluß	Typ	Kat. S.
30 lpm/8 gpm	PD10-45	2.380.1
113 lpm/30 gpm	PD12-45	2.382.1
170 lpm/45 gpm	PD16-45	2.386.1
265 lpm/70 gpm	*PD42-M45	2.388.1

*345 bar/5000 psi



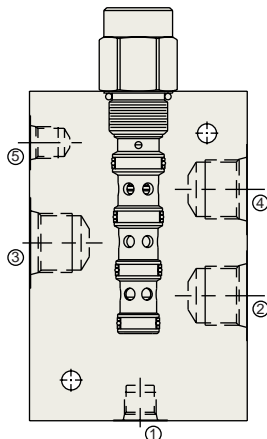
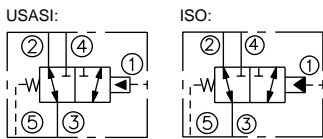
Hydr. gesteuertes 3-Wege Schieberventil

Durchfluß	Typ	Kat. S.
38 lpm/10 gpm	PD10-50	2.389.3



Hydr. gesteuertes 3-Wege Schieberventil, Federraum entlueftet

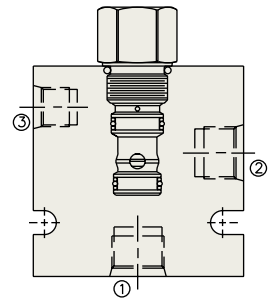
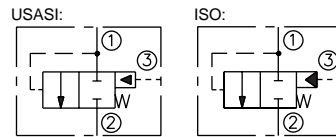
Durchfluß	Typ	Kat. S.
95 lpm/25 gpm	PD12-S50	2.389.5



Logikelement, hydr. angesteuert, Schieberventil

Durchfluß	Typ	Kat. S.
76 lpm/20 gpm	*EP10-S35	2.390.1
113 lpm/30 gpm	*EP12-S35	2.395.1
189 lpm/50 gpm	EP16-S35	2.400.1
379 lpm/100 gpm	*EP20-S35	2.405.1

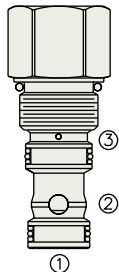
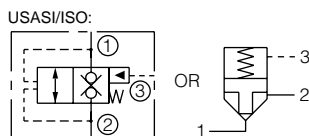
*345 bar/5000 psi



Logikelement, hydr. angesteuert, Sitzventil

Durchfluß	Typ	Kat. S.
113 lpm/30 gpm	*EP10-S38	2.410.1
302 lpm/80 gpm	*EP20-S38	2.415.1

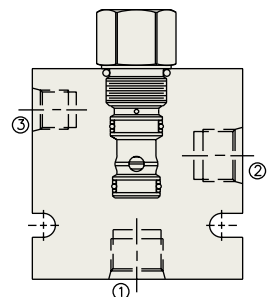
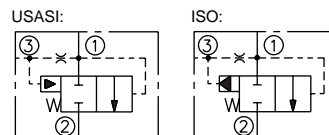
*345 bar/5000 psi



Logikelement, hydr. entlastbar, Schieberventil

Durchfluß	Typ	Kat. S.
76 lpm/20 gpm	*EV10-S34	2.425.1
113 lpm/30 gpm	*EV12-S34	2.430.1
189 lpm/50 gpm	EV16-S34	2.450.1
379 lpm/100 gpm	*EV20-S34	2.455.1

*345 bar/5000 psi



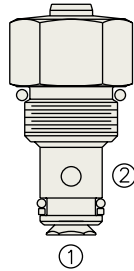
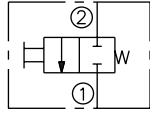
Handbetätigtes Ablaßventil, öffnet auf Druck

Durchfluß	Typ	Kat. S.
38 lpm/10 gpm	*MV08-22	2.785.1

* Ersetzt MV08-20; wenden Sie sich bitte an unser Werk.

Achtung: Manche Gehäuse mit Verschraubungen behindern die Ventilfunktion

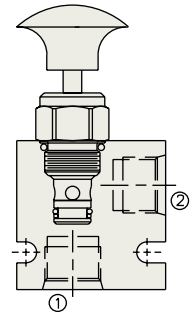
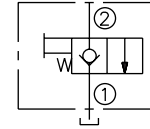
USASI/ISO:



2-Wege Handventil mit Federrückzug, normal geschlossen, öffnet auf Zug, wahlweise mit Raste

Durchfluß	Typ	Kat. S.
53 lpm/14 gpm	MP08-20	2.790.1
57 lpm/15 gpm	MP10-20	2.800.1

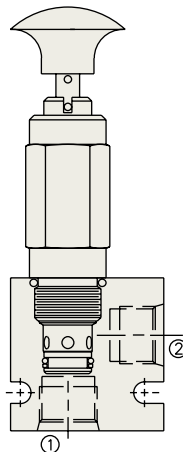
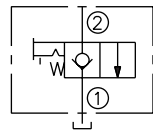
USASI/ISO:



2-Wege Handventil mit Federrückzug, normal geschlossen, öffnet auf Zug, wahlweise mit Raste

Durchfluß	Typ	Kat. S.
57 lpm/15 gpm	MP10-22	2.805.1

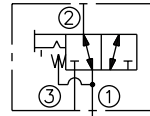
USASI/ISO:



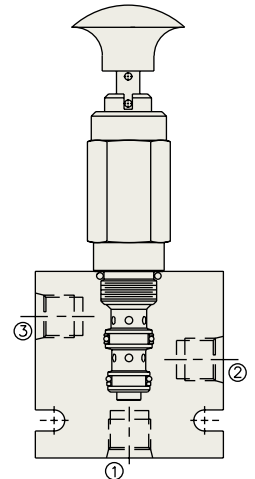
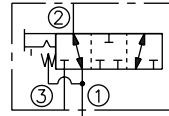
3-Wege Handventil mit Federrückzug, wahlweise mit Raste

Durchfluß	Typ	Kat. S.
19 lpm/5 gpm	MP08-30	2.820.1

USASI/ISO:



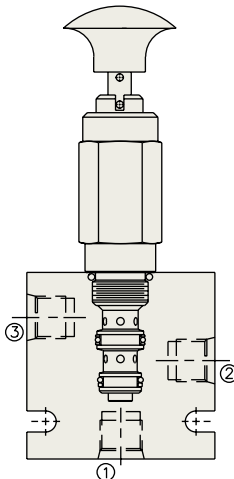
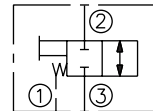
TRANSITION:



3-Wege Handventil mit Federrückzug

Durchfluß	Typ	Kat. S.
26 lpm/7 gpm	MP08-34	2.825.1

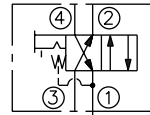
USASI/ISO:



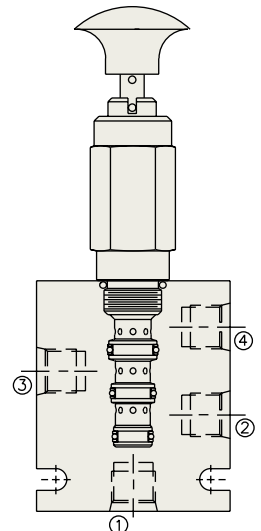
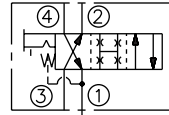
4-Wege Handventil mit Federrückzug, wahlweise mit Raste

Durchfluß	Typ	Kat. S.
11 lpm/3 gpm	MP08-40	2.830.1
22 lpm/6 gpm	MP10-40	2.850.1

USASI/ISO:



TRANSITION:

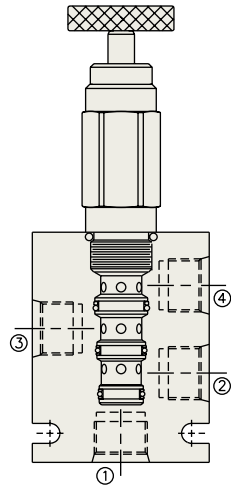
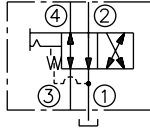


Wegeventile

4-Wege Handventil mit Federrückzug

Durchfluß	Typ	Kat. S.
37 lpm/10 gpm	MD10-40	2.852.1

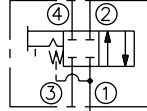
USASI/ISO:



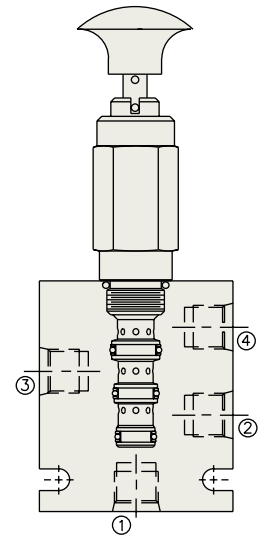
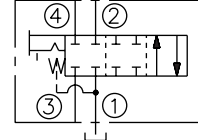
4-Wege Handventil mit Federrückzug, wahlweise mit Raste

Durchfluß	Typ	Kat. S.
15 lpm/3 gpm	MP08-41	2.855.1
22 lpm/6 gpm	MP10-41	2.860.1

USASI/ISO:



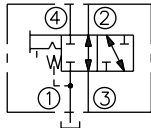
TRANSITION:



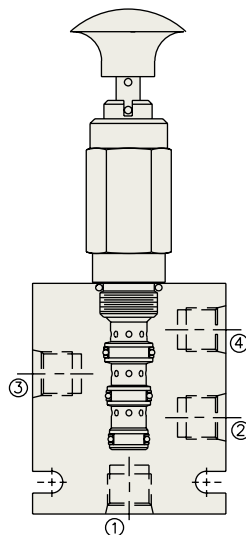
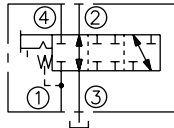
4-Wege Handventil mit Federrückzug, wahlweise mit Raste

Durchfluß	Typ	Kat. S.
33 lpm/9 gpm	MP10-42	2.865.1

USASI/ISO:



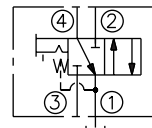
TRANSITION:



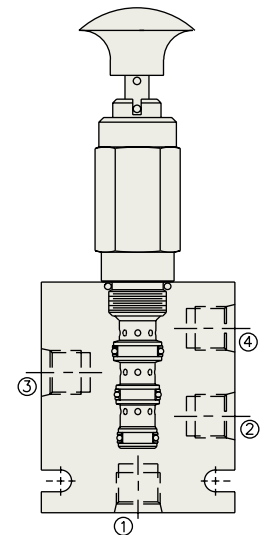
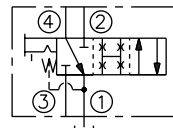
4-Wege Handventil mit Federrückzug, wahlweise mit Raste

Durchfluß	Typ	Kat. S.
22 lpm/6 gpm	MP10-43	2.875.1

USASI/ISO:



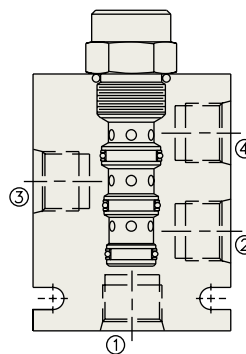
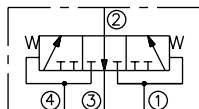
TRANSITION:



Bremslüftventil

Durchfluß	Typ	Kat. S.
7.5 lpm/2 gpm	BV10-40	2.900.1

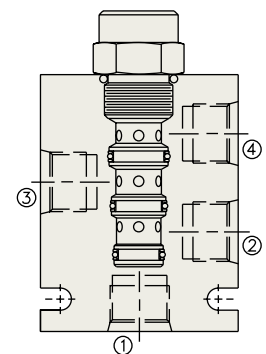
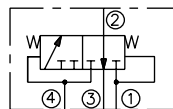
USASI/ISO:



Bremslüftventil

Durchfluß	Typ	Kat. S.
7.5 lpm/2 gpm	BV10-42	2.905.1

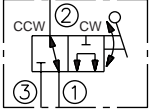
USASI/ISO:



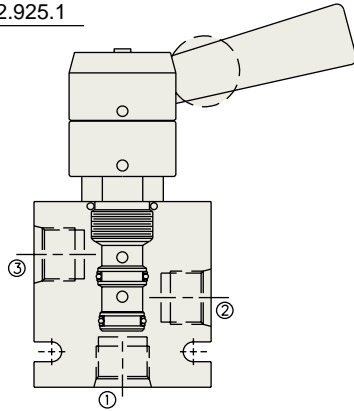
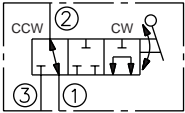
3/2-Wege Drehschieberventil

Durchfluß	Typ	Kat. S.
26.5 lpm/7 gpm	MR10-31	2.925.1

USASI/ISO:



TRANSITION:

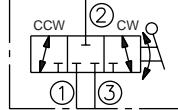


Zentrierfeder als Option erhältlich

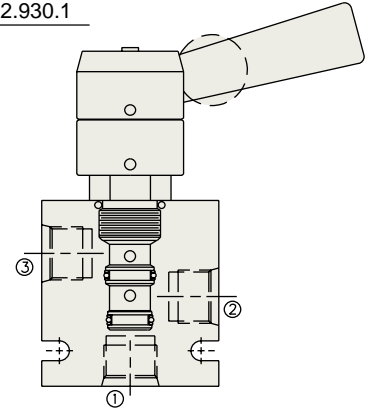
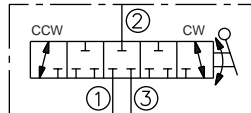
3/3-Wege Drehschieberventil

Durchfluß	Typ	Kat. S.
19 lpm/5 gpm	MR10-37A	2.930.1

USASI/ISO:



TRANSITION:

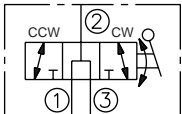


Zentrierfeder als Option erhältlich

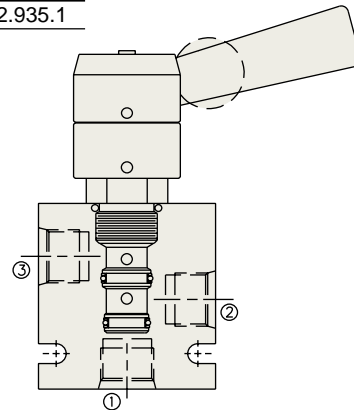
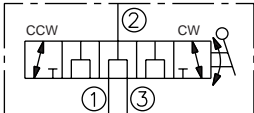
3/3-Wege Drehschieberventil

Durchfluß	Typ	Kat. S.
26 lpm/7 gpm	MR10-37B	2.935.1

USASI/ISO:



TRANSITION:

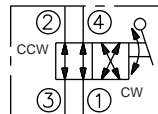


Zentrierfeder als Option erhältlich

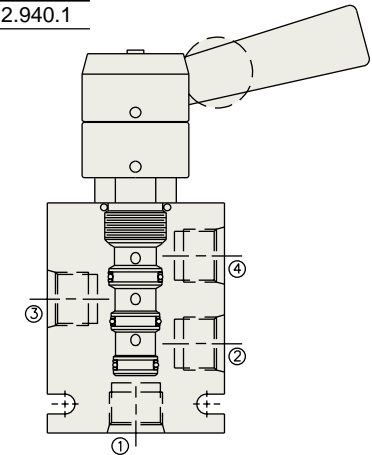
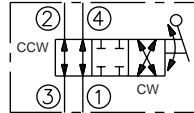
4/2-Wege Drehschieberventil

Durchfluß	Typ	Kat. S.
11.4 lpm/3 gpm	MR10-40	2.940.1

USASI/ISO:



TRANSITION:

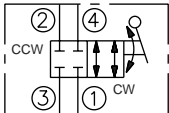


Zentrierfeder als Option erhältlich

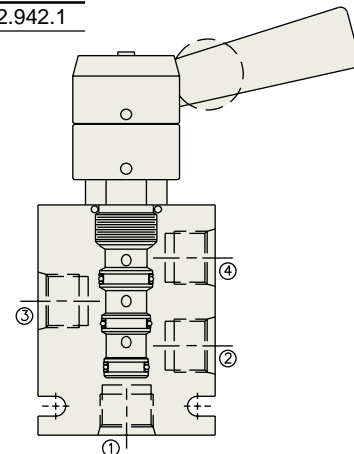
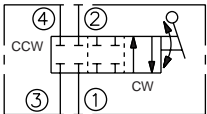
4/2-Wege Drehschieberventil

Durchfluß	Typ	Kat. S.
11.4 lpm/3 gpm	MR10-41	2.942.1

USASI/ISO:



TRANSITION:

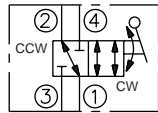


Zentrierfeder als Option erhältlich

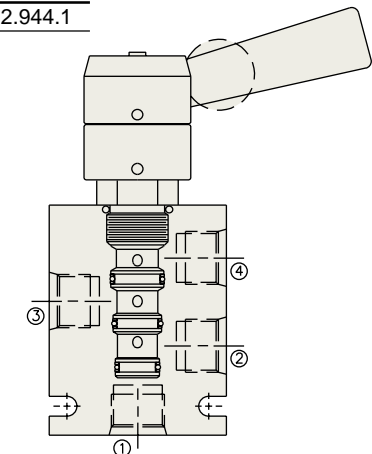
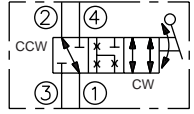
4/2-Wege Drehschieberventil

Durchfluß	Typ	Kat. S.
11.4 lpm/3 gpm	MR10-43	2.944.1

USASI/ISO:



TRANSITION:

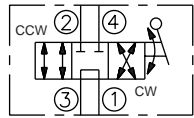


Zentrierfeder als Option erhältlich

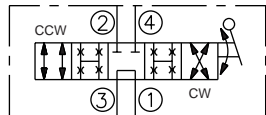
4/3-Wege Drehschieberventil, Mittelstellung druckloser Umlauf

Durchfluß	Typ	Kat. S.
11.4 lpm/3 gpm	MR10-47A	2.950.1

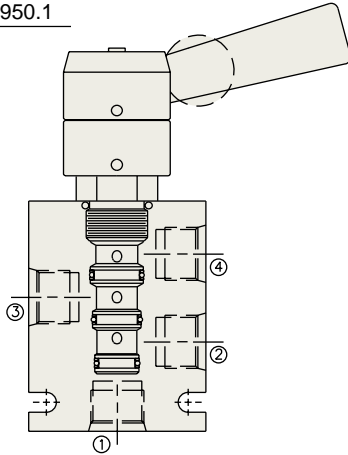
USASI/ISO:



TRANSITION:



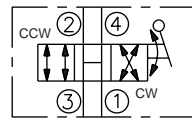
Zentrierfeder als
Option erhältlich



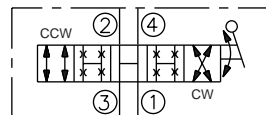
4/3-Wege Drehschieberventil, Mittelstellung alle Anschlüsse verbunden

Durchfluß	Typ	Kat. S.
11.4 lpm/3 gpm	MR10-47B	2.953.1

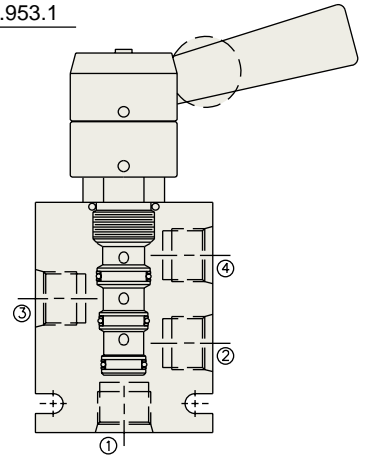
USASI/ISO:



TRANSITION:



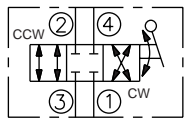
Zentrierfeder als
Option erhältlich



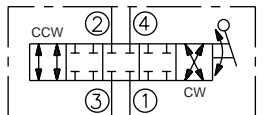
4/3-Wege Drehschieberventil, Mittelstellung alle Anschlüsse gesperrt

Durchfluß	Typ	Kat. S.
11.4 lpm/3 gpm	MR10-47C	2.955.1

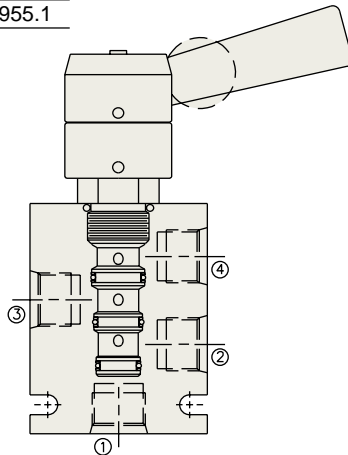
USASI/ISO:



TRANSITION:



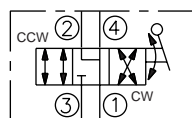
Zentrierfeder als
Option erhältlich



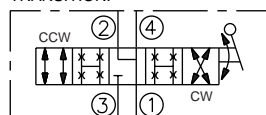
4/3-Wege Drehschieberventil, Mittelstellung A-B-T verbunden

Durchfluß	Typ	Kat. S.
11.4 lpm/3 gpm	MR10-47D	2.960.1

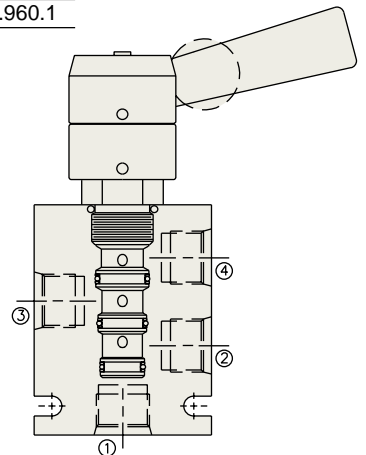
USASI/ISO:



TRANSITION:



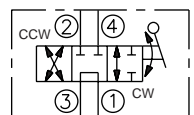
Zentrierfeder als
Option erhältlich



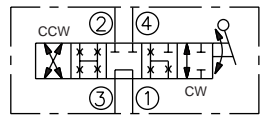
4/3-Wege Drehschieberventil

Durchfluß	Typ	Kat. S.
11.4 lpm/3 gpm	MR10-47F	2.965.1

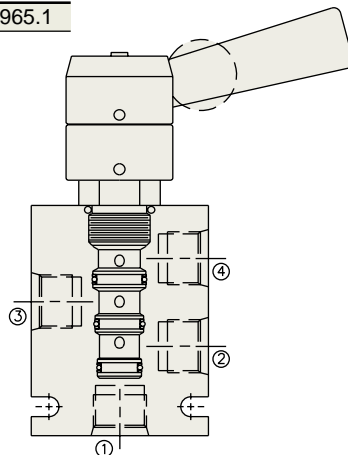
USASI/ISO:



TRANSITION:



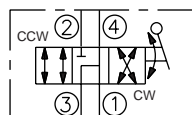
Zentrierfeder als
Option erhältlich



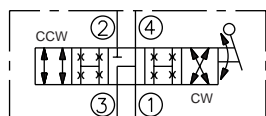
4/3-Wege Drehschieberventil

Durchfluß	Typ	Kat. S.
11.4 lpm/3 gpm	MR10-47G	2.973.1

USASI/ISO:



TRANSITION:



Zentrierfeder als
Option erhältlich

